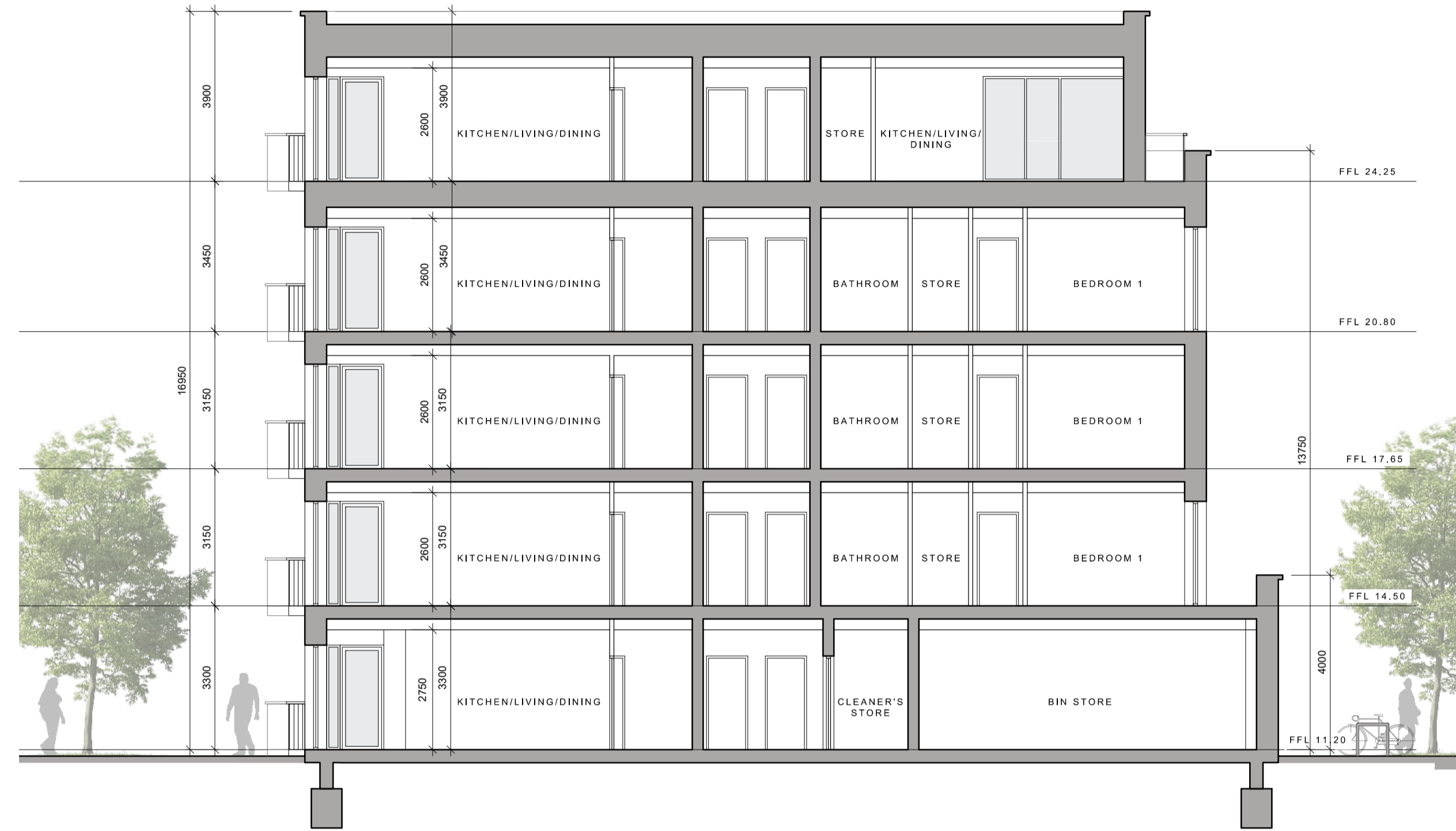




BLOCK 8 SOUTH FACING ELEVATION
SCALE: 1:100



BLOCK 8 SECTION A-A
SCALE: 1:100

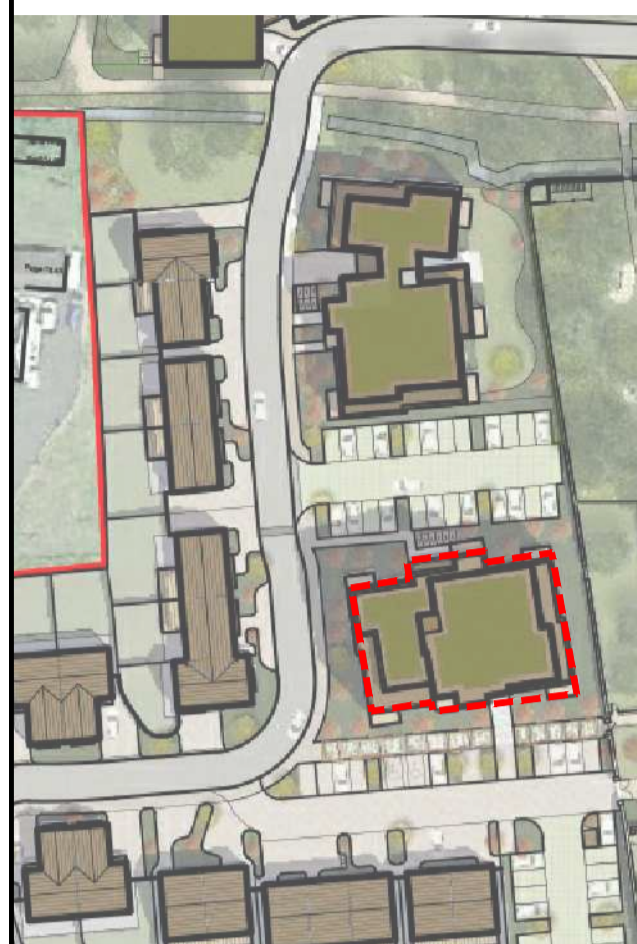


BLOCK 8 WEST FACING ELEVATION
SCALE: 1:100



BLOCK 8 EAST FACING ELEVATION
SCALE: 1:100

- © This drawing is copyright.
- 1 Do not scale this drawing.
- 2 Errors and omissions to be immediately notified to Architect.
- 3 All dimensions to be checked on site.
- 4 To be read with relevant Engineers drawings.



KEY PLAN
INDICATING POSITION OF APARTMENT BLOCK 8
NOT TO SCALE

- Notes:**
All dimensions in millimetres
- External Finishes:**
Roof: Selected flat roof with parapets to walls. Sedum green roof as indicated.
Walls: Selected facing brick and/or painted/self coloured render
Metal spandrel and glazed system at penthouse
- Windows:**
Window system framed in aluminium, uPVC or similar
- Gutters/downpipes:**
Internal outlets
- Balconies:**
Powder coated steel or similar balustrades to detail;
Glazed balustrade at penthouse as indicated
- Doors:**
Powder coated aluminium or similar door with fanlight and/or sidelight and/or glazed light in leaf
- Foundations:**
Refer to structural engineer's report for further details on structure/foundation design

revisions	date	in/s
description		
Auburn Streamstown		
Apartment Block 8 South, East & West Elevations, Section A-A		
job	scale	drawing no.
DEVELOPMENT AT AUBURN, MALAHIDE	1:100 A1	1902 P 383
client	date	rev.
KINWEST LIMITED	Mar' 2021	
issue	drawn	
AUBURN SHD PLANNING	MG	
CONROY CROWE KELLY ARCHITECTS	checked	
65 MERRION SQUARE DUBLIN 2	MC	
PHONE 66139901 FAX 6765715		
E-MAIL info@ceck.ie		